

# A Snapshot of Walking in Boulder

Draft

Average Trip Is Almost  
**1 Mile**



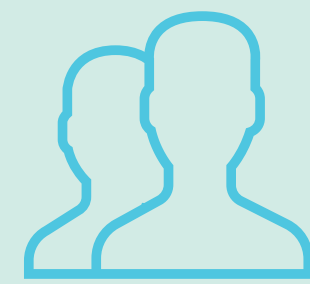
**18%**  
of Trips by  
Residents are  
made by Foot

Average Trip



Takes About

## Top 3 Reasons People Walk



Social/Recreation  
24%



School  
8.8%



Food  
7.5%



CU Students  
Walk More  
than Residents

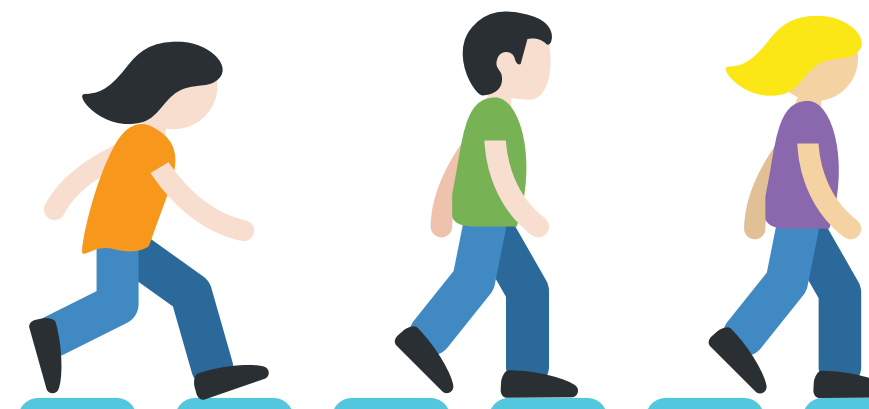


**10%**  
of Residents  
Walk to Work

Residents



Walk About  
**3 mph**



Boulder has over...

**515** Miles  
of Sidewalks

**85** Miles of  
Multi-use Paths

