

Central Broadway: Alpine-Balsam Area Plan, Medical Pavilion Reuse Analysis, Financial and Partnerships Strategy, and Other Related Project Updates

6:00 pm	Review Study Session Agenda (2 min)	<i>Presenter: Molly Scarbrough, Public Works</i>
	PART 1	
6:02 pm	1. Background (5 min)	<i>Presenter: Lesli Ellis, Planning, Housing & Sustainability (PH&S)</i>
6:07 pm	2. Alpine-Balsam Area Plan (10 min)	<i>Presenters: Caitlin Zacharias, PH&S and Jean Gatzka, PH&S</i>
6:17 pm	COUNCIL DISCUSSION (1 hour)	

Council Questions:

- *Does council have feedback on the objectives for area planning within the Central Broadway context?*
- *Does council have feedback on the approach to Alpine-Balsam area planning, including the purpose statement, scope and key considerations, planning area, and the engagement and communications plan?*

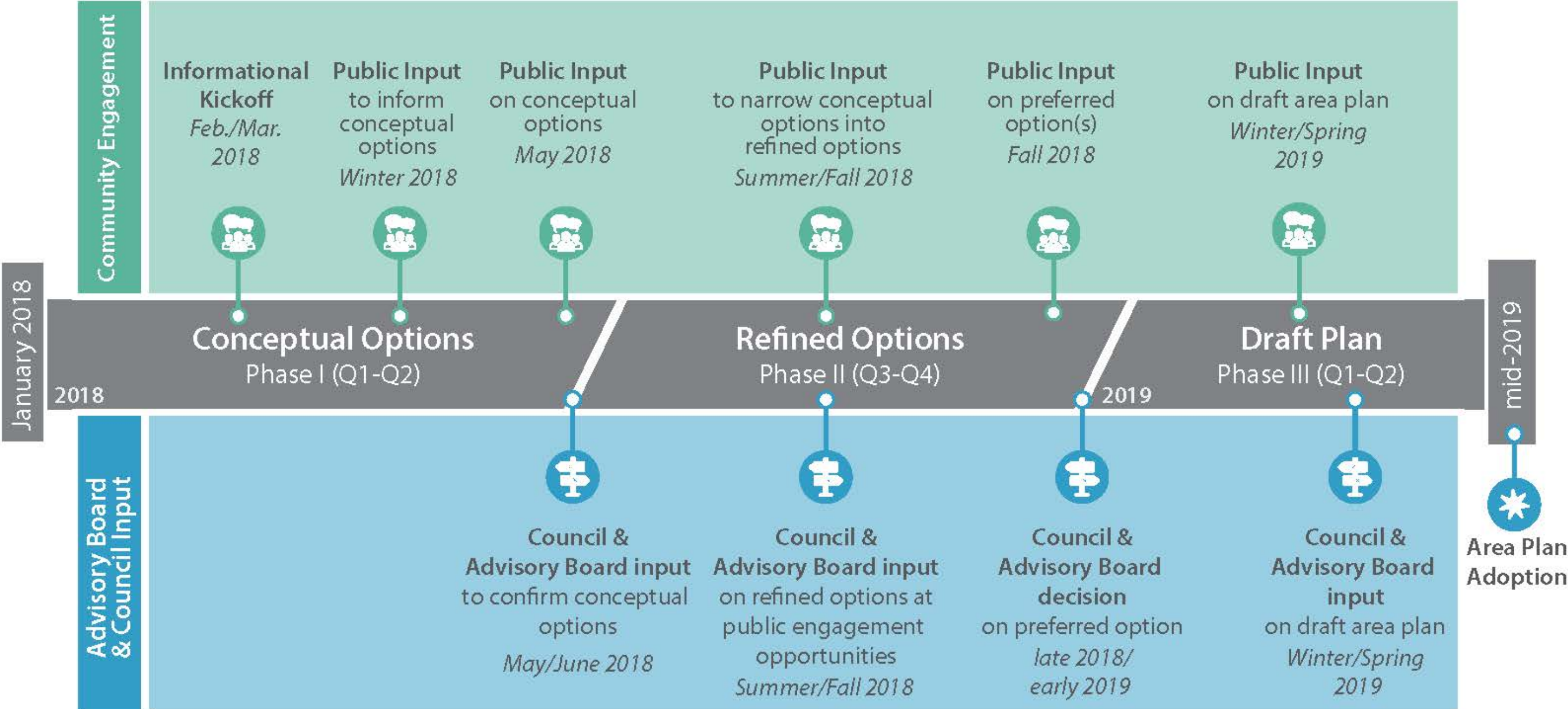
PART 2

7:17 pm	3. Medical Pavilion Reuse Analysis (9 min)	<i>Presenter: Michele Crane, Public Works, Facilities and Asset Management</i>
7:26 pm	4. Financial and Partnerships Analysis and Strategy (3 min)	<i>Presenter: Amanda Bevis, Public Works</i>
7:29 pm	5. Next Steps (1 min)	<i>Presenter: Molly Scarbrough, Public Works</i>
7:30 pm	COUNCIL DISCUSSION (30 min)	

Council Questions:

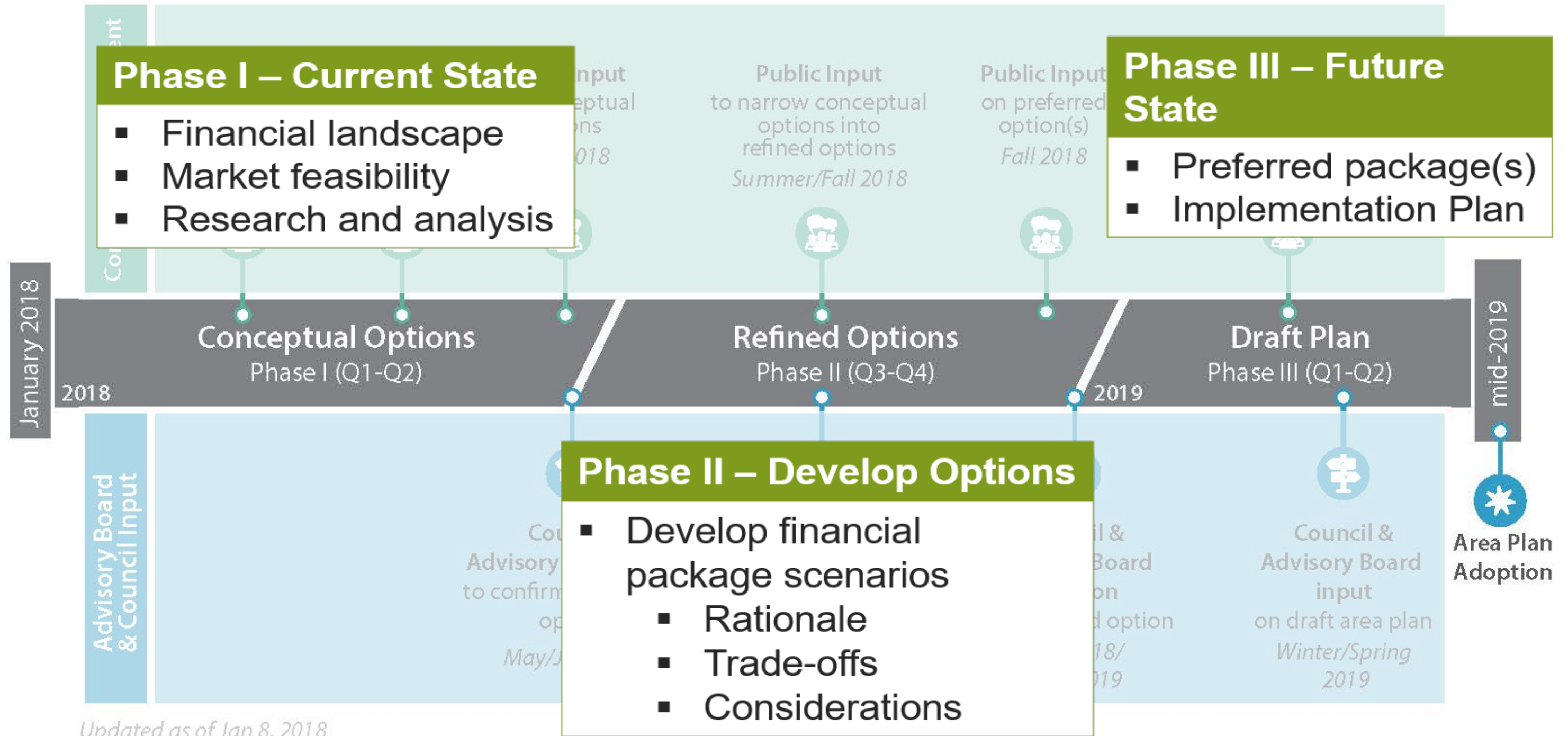
- *Does council have feedback on the Medical Pavilion reuse analysis and renovation next steps?*
- *Does council have feedback on the suggested approach to develop a financial and partnerships strategy in tandem with the area planning process?*

Alpine-Balsam Phasing and Timeline



Updated as of Jan 8, 2018

Exploring Financing and Partnerships Options



Updated as of Jan 8, 2018