



# BOULDER MUNICIPAL COURT

Quarterly Update

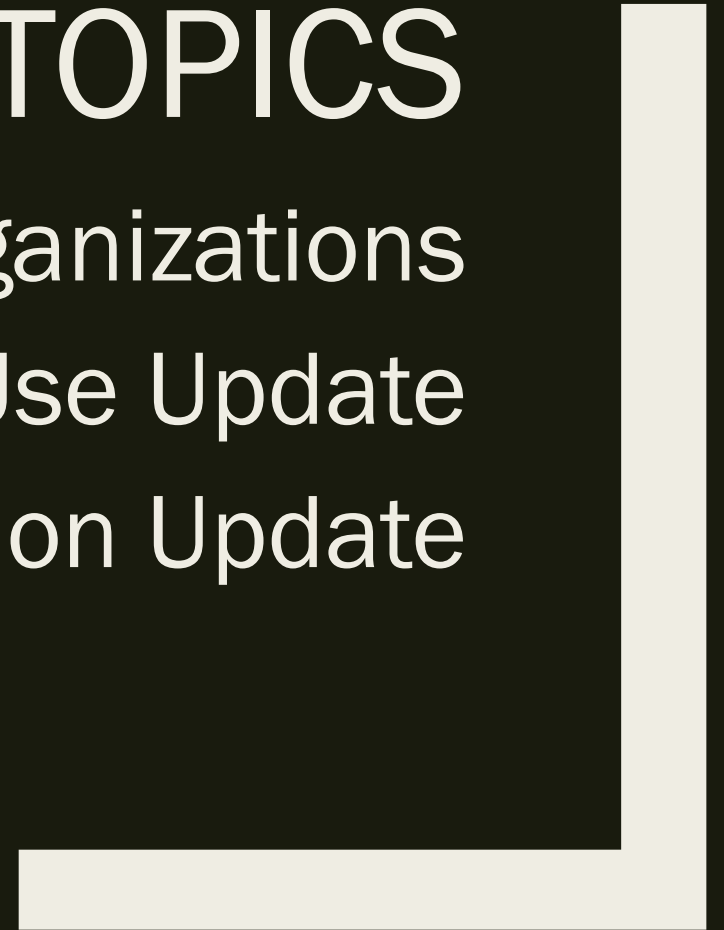
May 15, 2018

# TOPICS

Opportunities with National Organizations

Underage Substance Use Update

Homeless Navigation Update



# Opportunities with National Organizations

- National Association for Municipal Courts
  - *Charter Meeting at NLC in D.C. March 2017 (12 judges from around the country)*
  - *Follow-up Meeting in Atlanta March 2018*
  - *Exploring options for forming under the NLC umbrella*
  - *Judge Cooke and James Cho in leadership roles*
  - *Submitted workshop proposal for NLC City Summit, November 2018*

# Opportunities with National Organizations

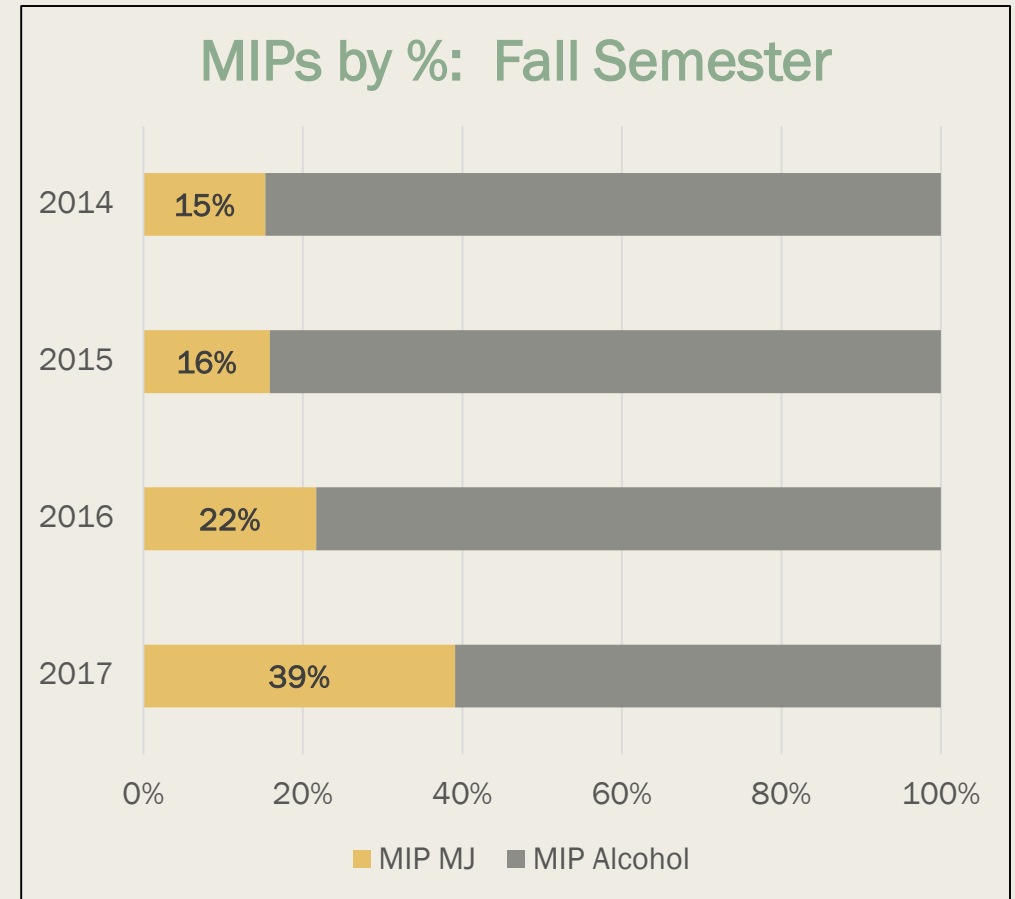
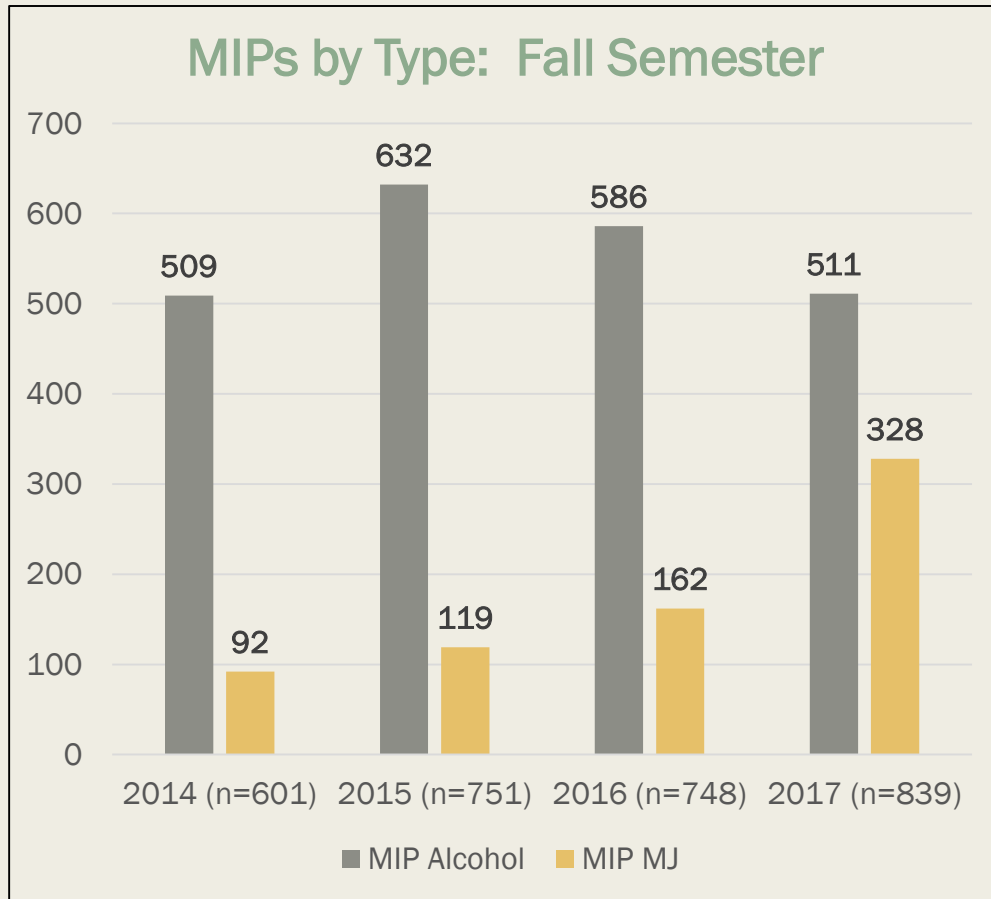
- Pretrial Justice Institute (PJI)
  - *Mission is bond reform, especially money-based vs. risk-based pretrial detention*
  - *Participant in PJI-LEAD program*
  - *My capstone project: identify & test creative ways to increase court attendance by the homeless*
- Possible partnership with Tom Carr to provide training to municipal prosecutors re: best practices in working with the homeless in municipal courts



# Underage Substance Use Update

- MIP (Minor in Possession) Cases as a proxy for substance use & quality of life issues in Boulder
- Citations issued by Boulder PD & CUPD
- ~ 50% of citations issued during 1<sup>st</sup> month of CU's academic year to send a message about our community's expectations concerning underage substance use

# Underage Substance Use Update



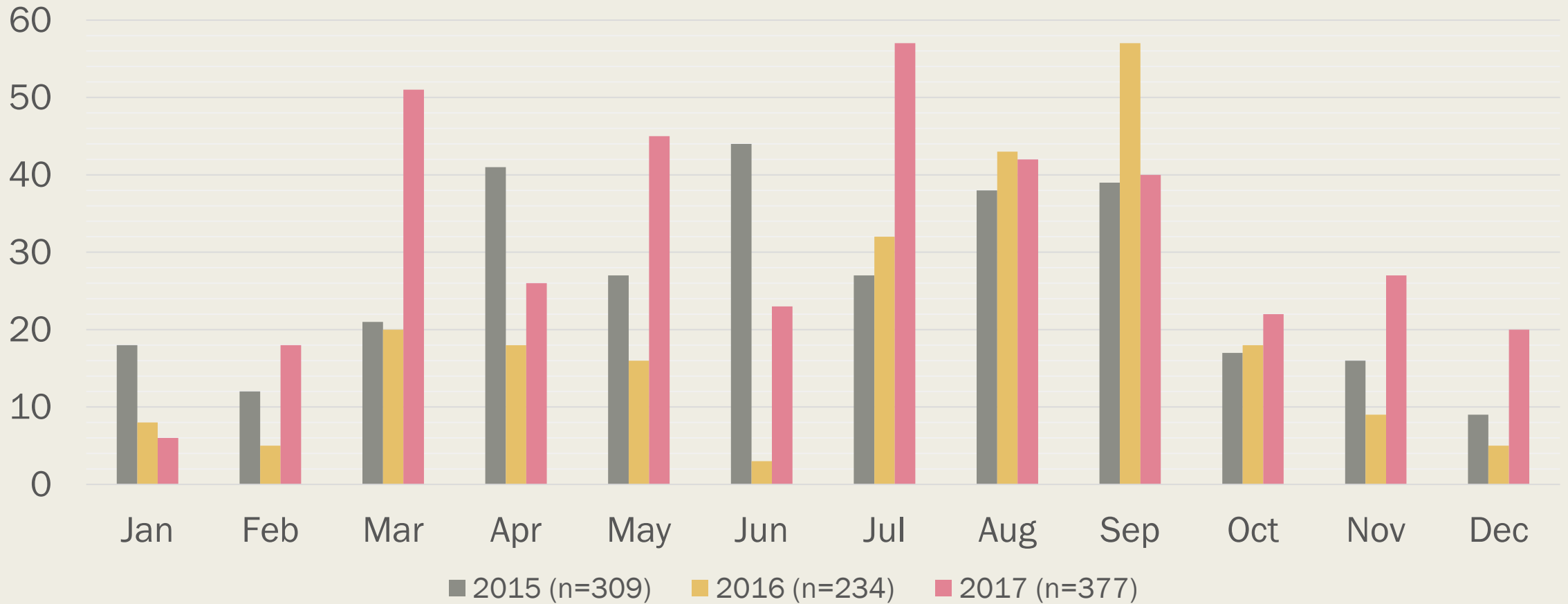
# HOMELESS NAVIGATION UPDATE

Camping Filings

Street Medicine Initiative

Homeless Navigator outcomes

Court High Utilizers and Coordinated Entry



# Camping Citations by Month & Year





# Street Medicine

Street Medicine is the direct provision of health care to the unsheltered homeless where they live.

The Street Medicine Institute has helped cultivate or improve Street Medicine programs in over 85 cities located in 15 countries across 5 continents.

Homeless Navigator & HOT officers partnered with Clinica to implement Street Medicine in Boulder.

# Navigator Outcomes: Documentation

2017 Accomplishments	Number
VISPDAT & Housing Match Form	48+
Disability Verifications Obtained	17
Birth Certificates Obtained	15
Verifications of Chronic Homelessness Obtained	12
Social Security Cards Obtained	10
Successful Social Security/Disability Applications	3
Letters of Residency	3
Transcripts (alternate proof of identity)	2

# Navigator Outcomes: Housing-related

2017 Accomplishments	Number
Clients Housed in 2017	14
Clients referred to Ft. Lyon in 2017	12
Clients with Unfilled Vouchers	10
Clients who are “Document Ready”	3
Clients in “Pre-match” with MDHI	32
Clients referred to Rapid Rehousing & pending placement	3
Clients who successfully petitioned for “Alternate Referral”	1

Coordinated  
Entry (CE)

&

Court High  
Utilizers (HUs)

65 Court HUs were  
identified at  
inception of CE  
(October 2017)

Criteria based on  
number of citations  
during previous 18  
months

2 HUs are now  
deceased

Data for remaining  
63 HUs follows

Outcome	Number	Percentage
No CE Assessment	31	48%
CE Assessment completed	20	31%
No recent contact	14	22%
Now deceased	2	(3%)

**CE Status:  
Muni Court  
High Utilizers**

# HIGH UTILIZER USE OF HOMELESS SHELTER

---

	Current RB?	RB ever?	SB ever?
CE (n = 19)	0	4	11*

---

RB = Reserved Bed

SB = Standby Bed

\*Of these 11 (58%), four (21%) stayed in a Reserved Bed at some point

# HIGH UTILIZER USE OF PTH & SWS SHELTER

---

	SWS	PTH	TOTAL
CE (n = 11/19)	20	15	35
Other (n = 6/44)	17	8	25

---

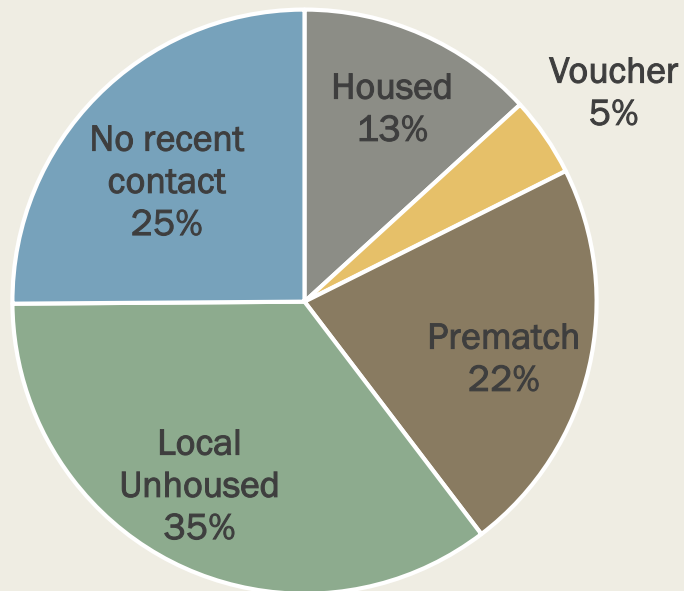
SWS = Severe  
Weather Shelter

PTH = Path to Home  
(Usually 1 free night  
before CE assessment)

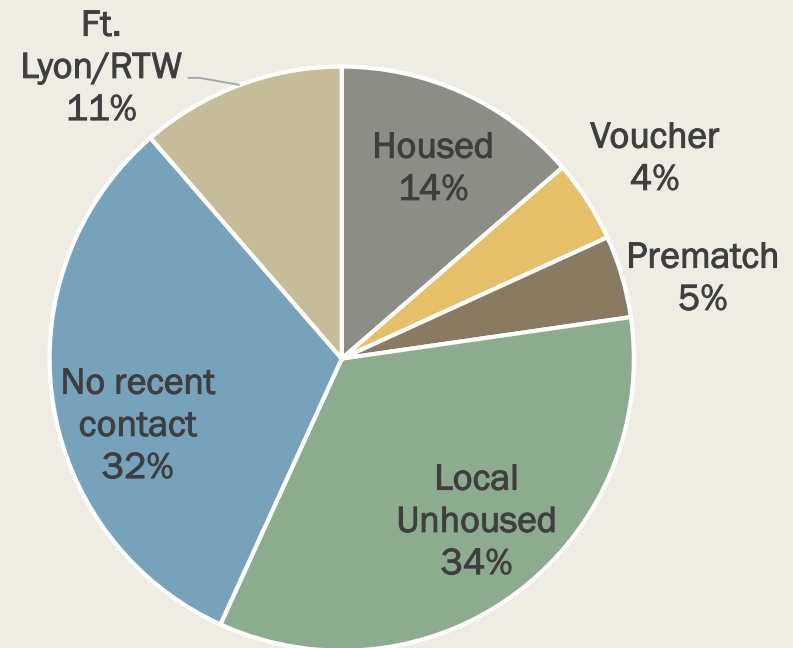
Total = All bed  
nights used  
(SWS + PTH)

# HIGH UTILIZER HOUSING STATUS

CE Participants (n = 19)



Others (n = 44)





# High Utilizer Experience with Coordinated Entry

---

Suspicion of system that uses entities toward which individuals may have a pre-existing negative bias

---

Intellectual disabilities, physical disabilities and mental illness can be a barrier to assessment

---

Inaccurate reporting of current condition resulting in inappropriate referral

---

Inability or unwillingness to stay at the designated resource, resulting in less robust case management

---

Insufficient exits to, and long wait times for, housing (all homeless, not just those in CE)

---

BUT . . . as service gaps emerge, they are being identified, catalogued, and a process is developing to address them

QUESTIONS?