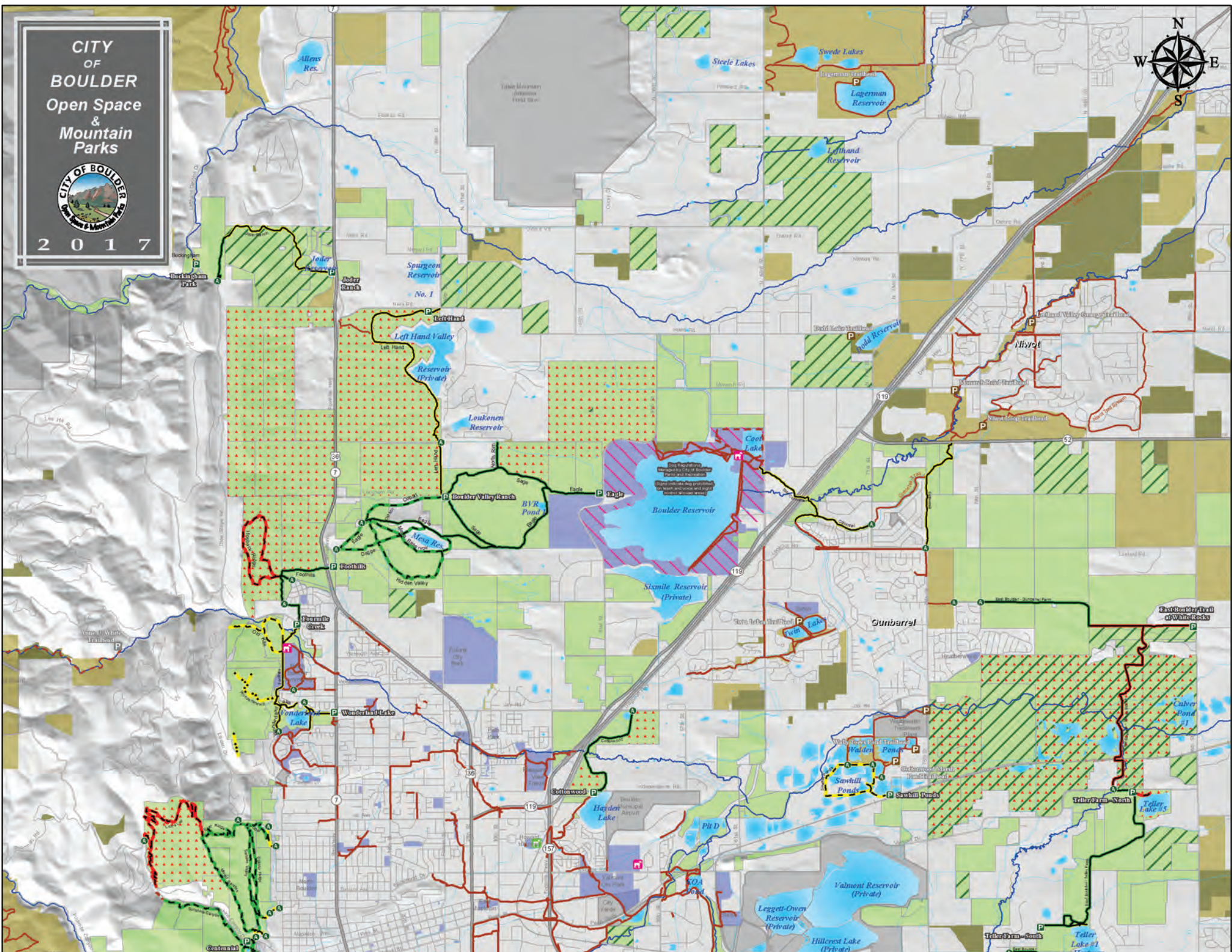
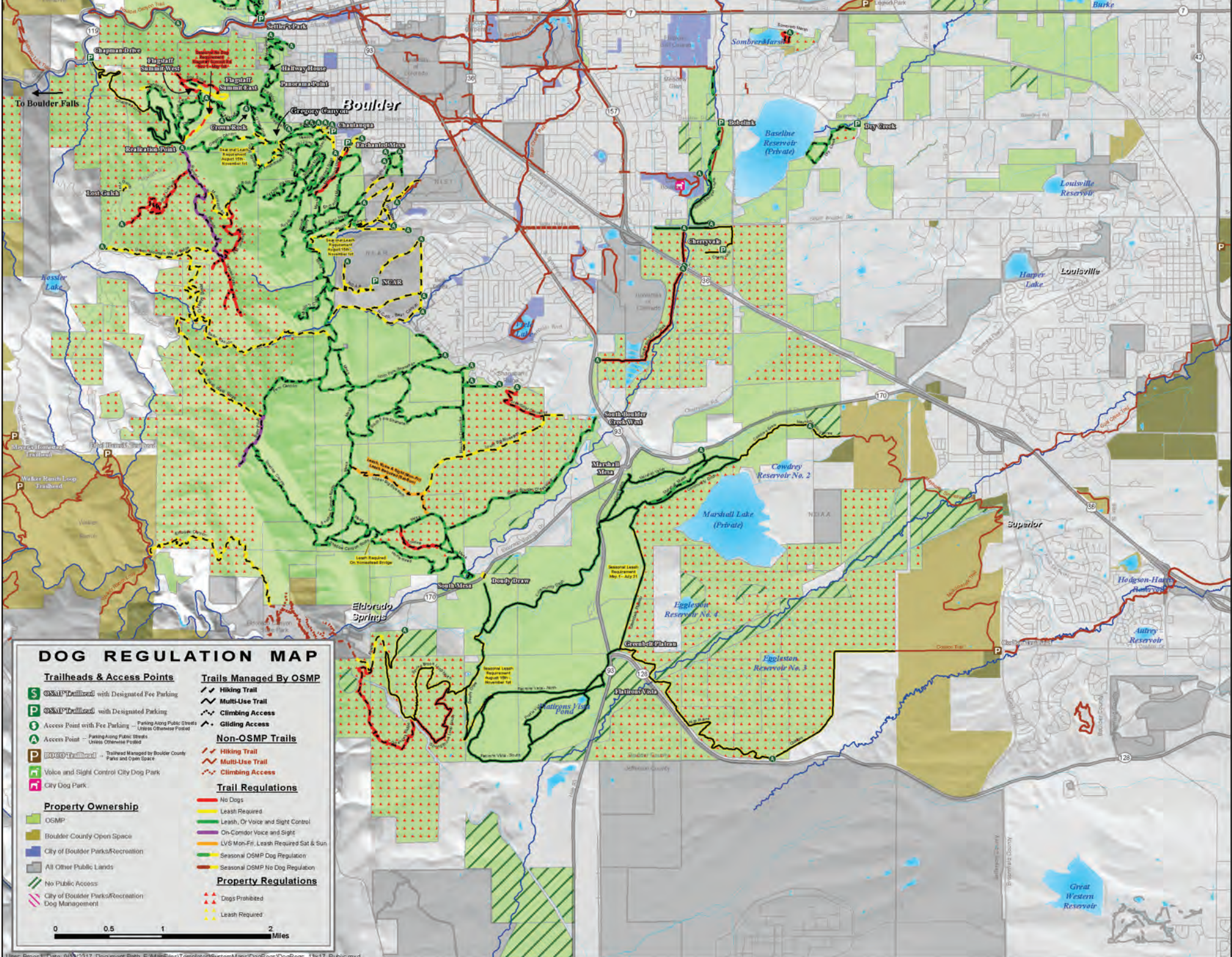


CITY OF BOULDER
Open Space & Mountain Parks



2017





DOG REGULATION MAP

- | | | | |
|---|--|-------------------------------|-----------------|
| Trailheads & Access Points | | Trails Managed By OSMP | |
| OSMP Trailhead with Designated Fee Parking | Hiking Trail | Multi-Use Trail | Climbing Access |
| OSMP Trailhead with Designated Parking | Access Point | Gliding Access | |
| Access Point with Fee Parking - Parking Along Public Streets Unless Otherwise Noted | Access Point - Parking Along Public Streets Unless Otherwise Noted | Non-OSMP Trails | |
| OSMP Trailhead - Trailhead Managed by Boulder County Parks and Open Space | Voice and Sight Control City Dog Park | Hiking Trail | Multi-Use Trail |
| City Dog Park | | Climbing Access | |
| Property Ownership | | Trail Regulations | |
| OSMP | No Dogs | Leash Required | Dogs Prohibited |
| Boulder County Open Space | Leash, Or Voice and Sight Control | On-Comidor Voice and Sight | Leash Required |
| City of Boulder Parks/Recreation | LV6 Mon-Fri, Leash Required Sat & Sun | Seasonal OSMP Dog Regulation | |
| All Other Public Lands | Seasonal OSMP No Dog Regulation | | |
| No Public Access | | Property Regulations | |
| City of Boulder Parks/Recreation Dog Management | | Dogs Prohibited | |
| | | Leash Required | |

0 0.5 1 2 Miles