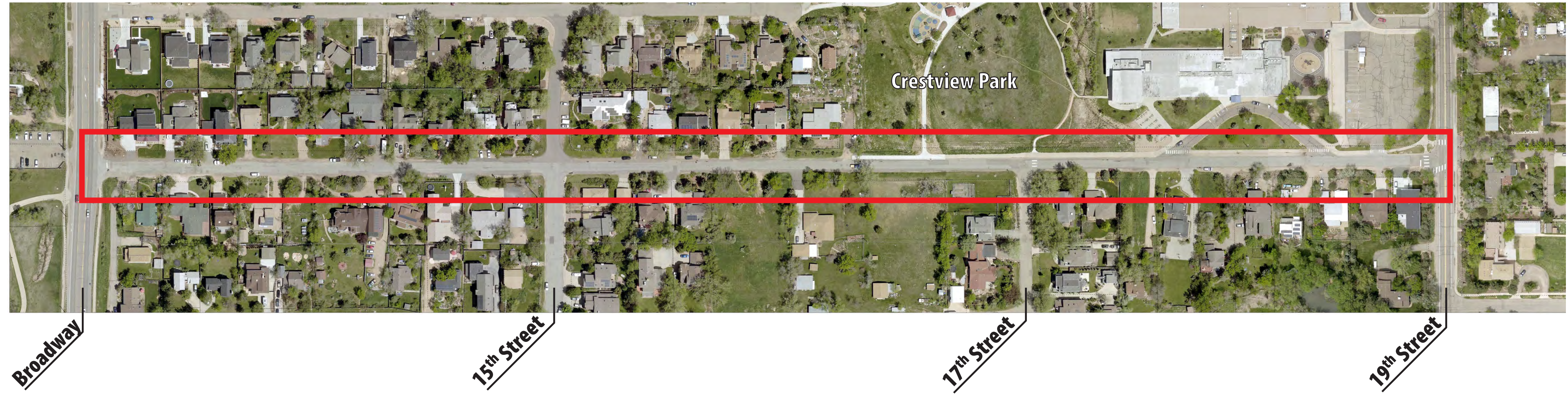
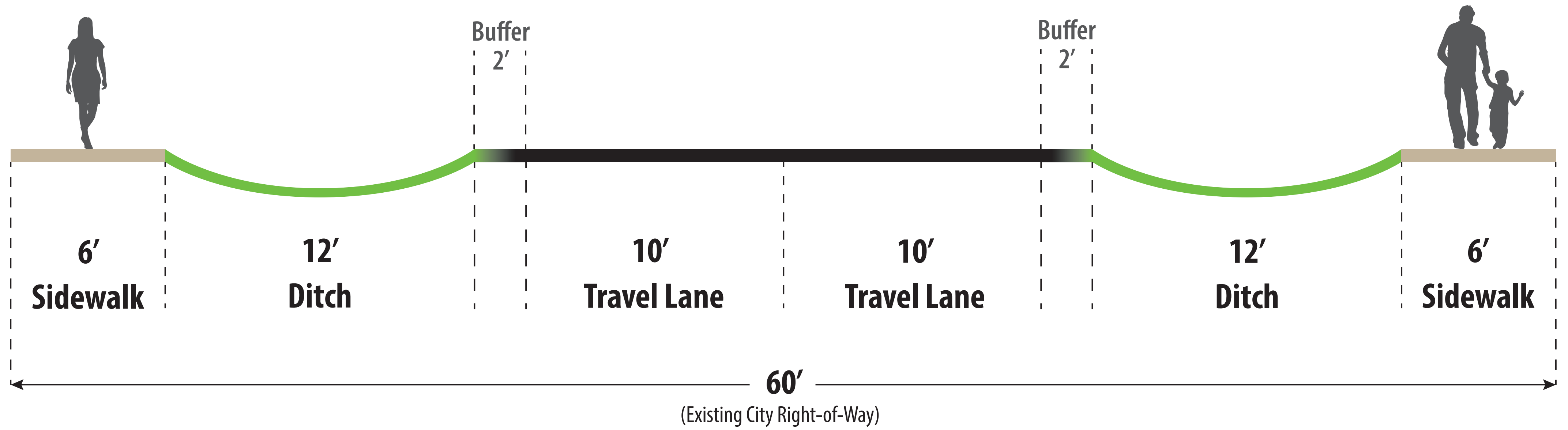


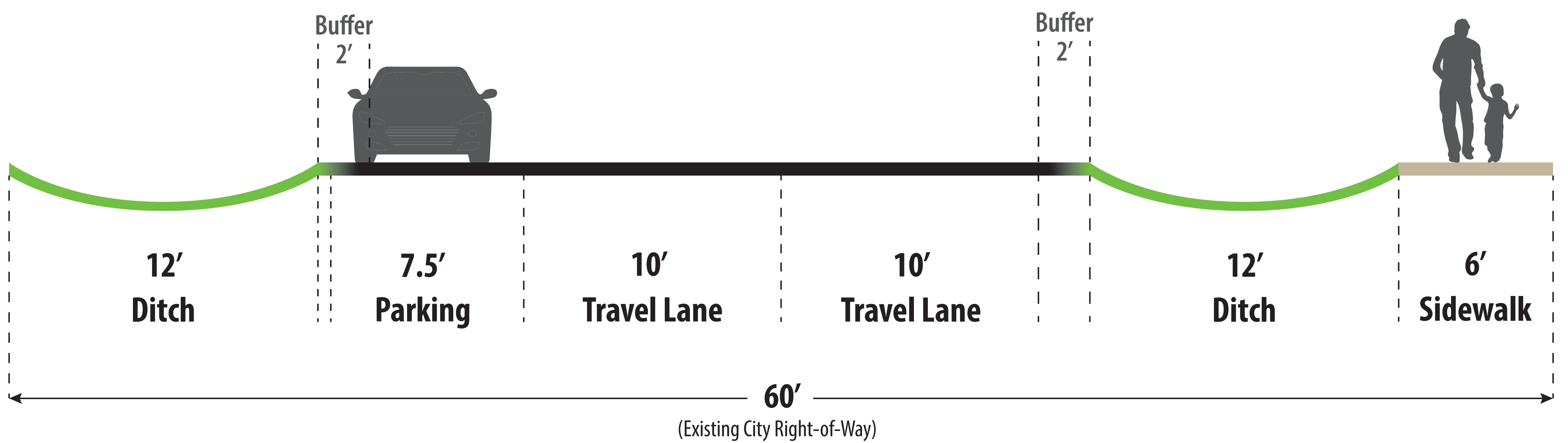
Entire Corridor - Broadway to 19th Street



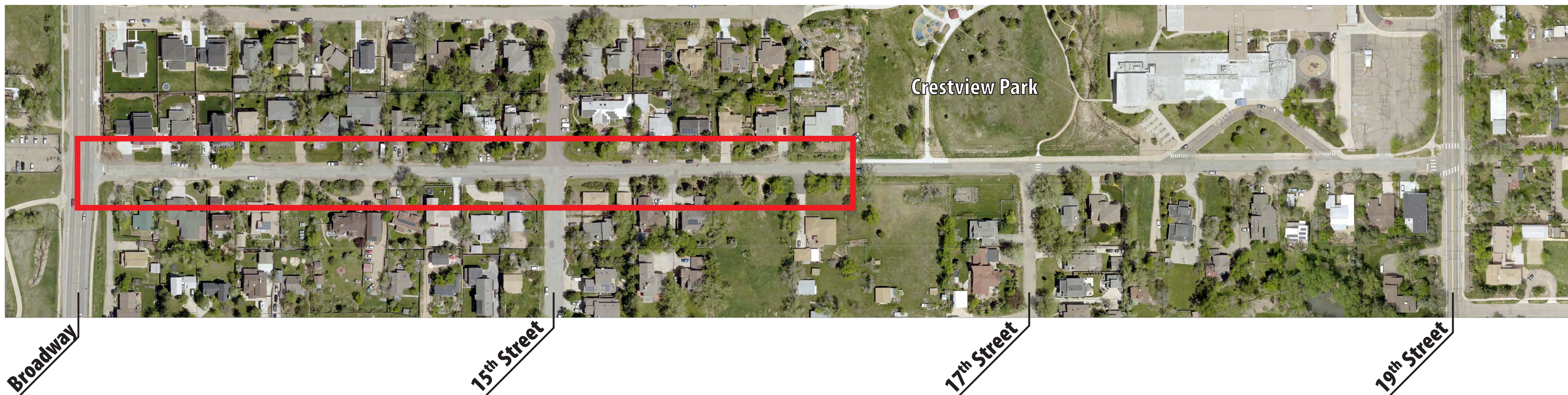
Ditch A - 2 Sidewalks



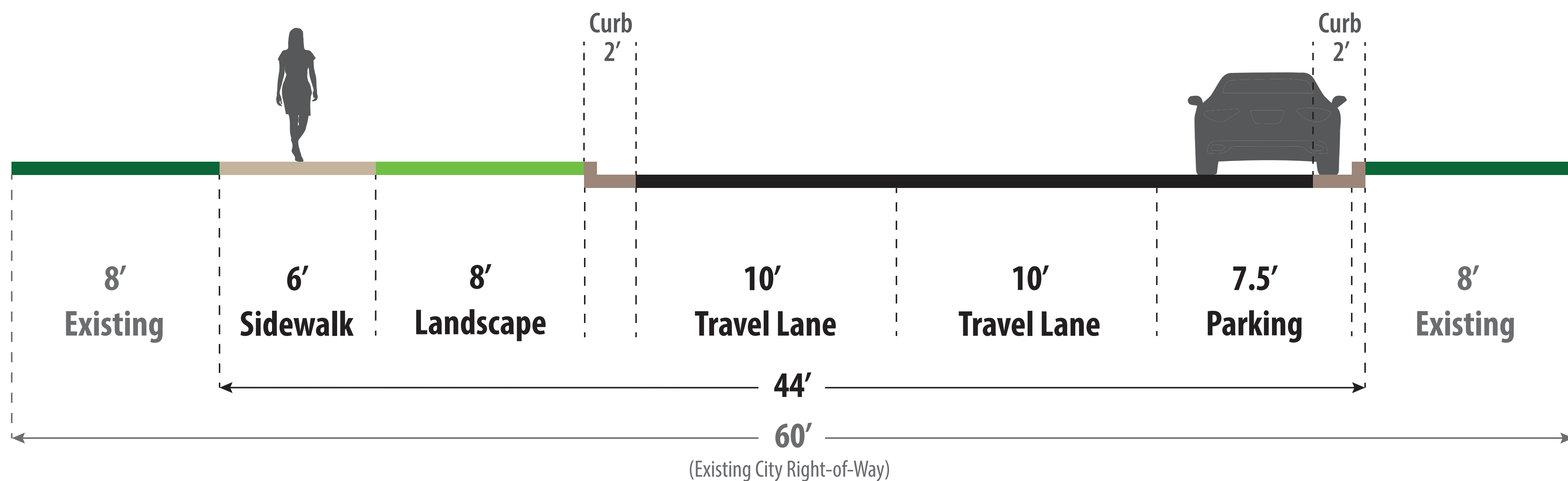
Ditch B - 1 Sidewalk & 1 Parking Lane



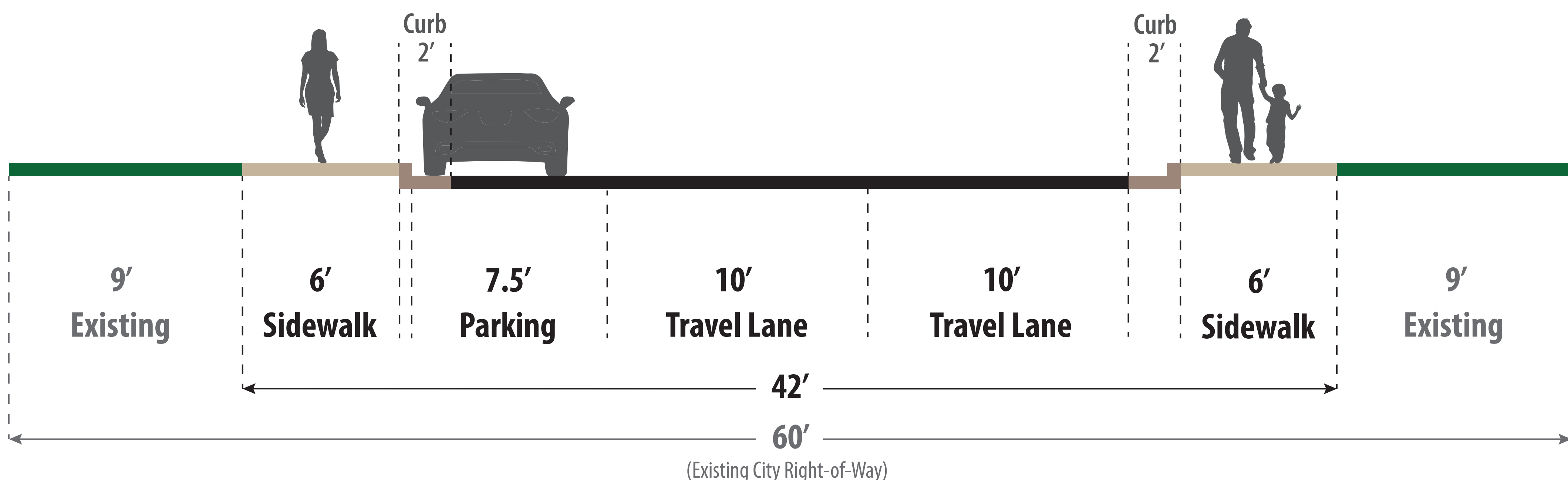
West Sumac - Broadway to Crestview Park



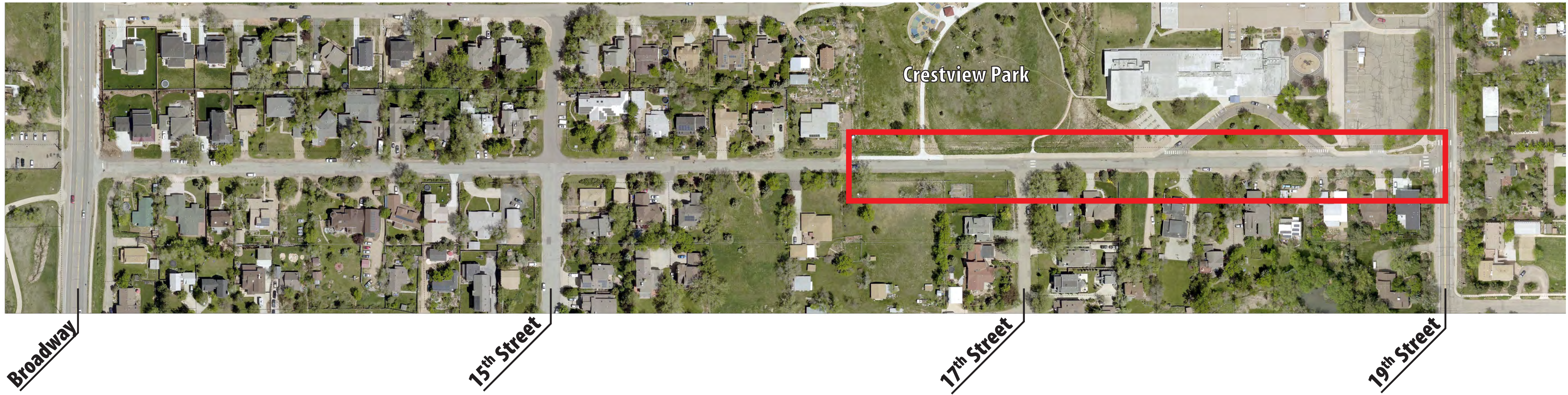
Curb + Gutter A - 1 Sidewalk & 1 Parking Lane



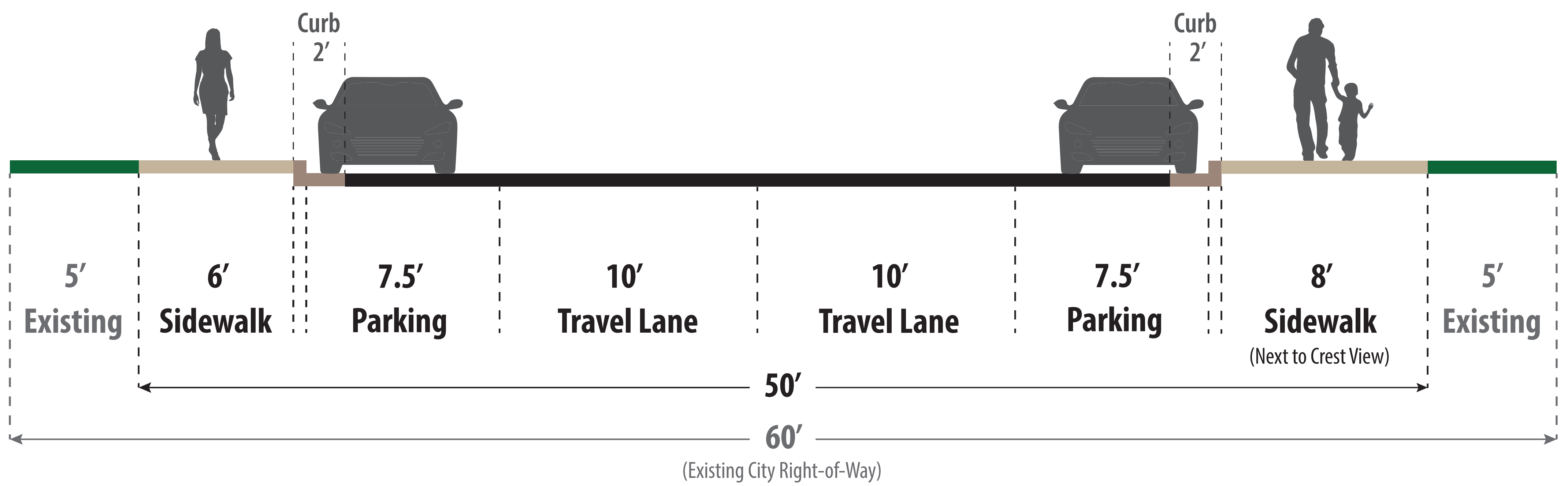
Curb + Gutter B - 2 Sidewalks & 1 Parking Lane



East Sumac - Crestview Park to 19th Street



Curb + Gutter C - 2 Sidewalks & 2 Parking Lanes



Curb + Gutter D - 1 Sidewalk & 2 Parking Lanes

