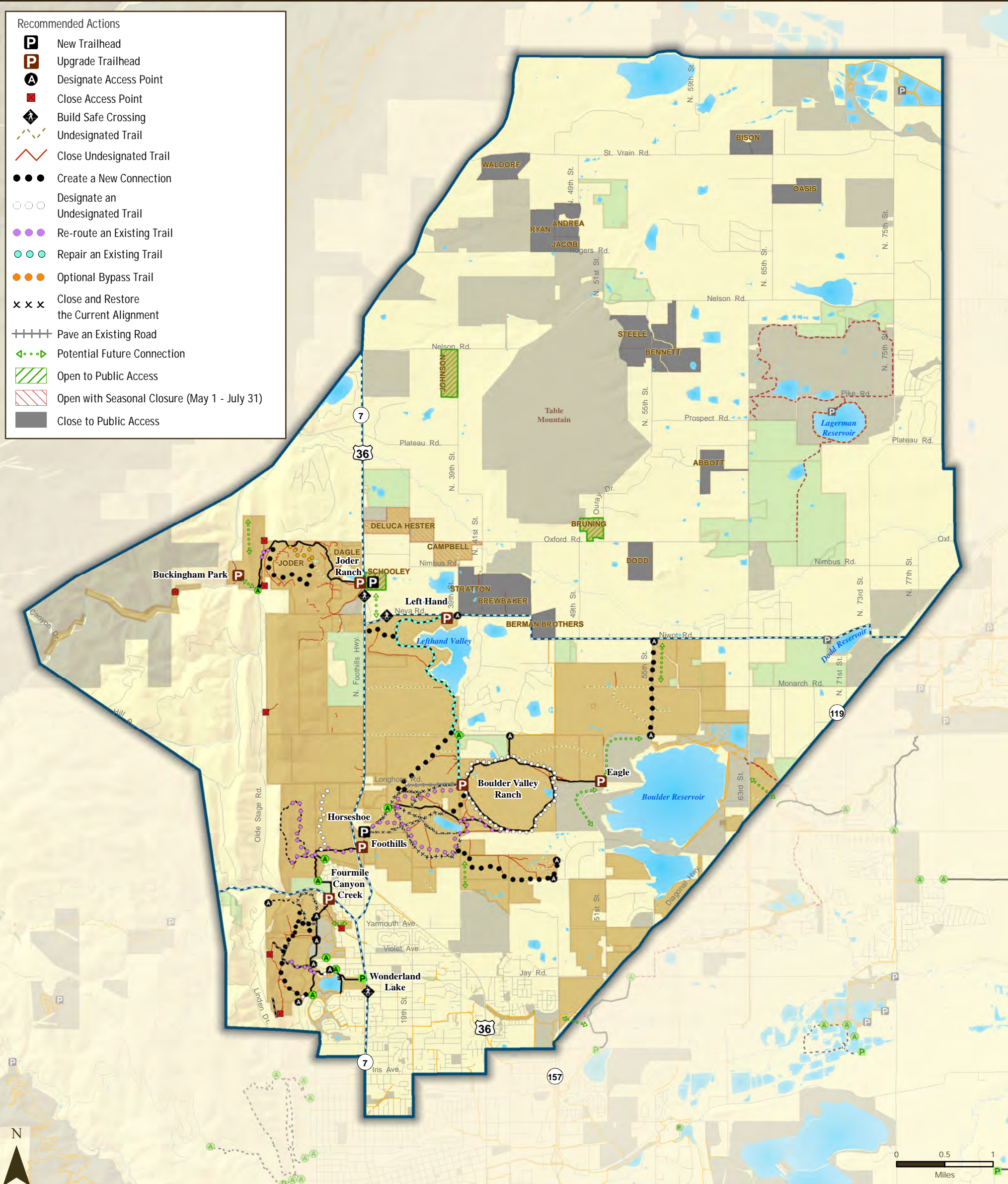


# North Trail Study Area Plan

- Recommended Actions**
- New Trailhead
  - Upgrade Trailhead
  - Designate Access Point
  - Close Access Point
  - Build Safe Crossing
  - Undesignated Trail
  - Close Undesignated Trail
  - Create a New Connection
  - Designate an Undesignated Trail
  - Re-route an Existing Trail
  - Repair an Existing Trail
  - Optional Bypass Trail
  - Close and Restore the Current Alignment
  - Pave an Existing Road
  - Potential Future Connection
  - Open to Public Access
  - Open with Seasonal Closure (May 1 - July 31)
  - Close to Public Access



## North Trail Study Area Alternative Scenario Recommendations

OSBT Changes Included

- |  |                                  |  |                                  |  |   |
|--|----------------------------------|--|----------------------------------|--|---|
|  | North Trail Study Planning Area  |  | OSMP Hiking/Equestrian Trail     |  | OSMP Fee & Managed Property in the North TSA        |
|  | North Trail Study Subareas       |  | OSMP Multi-Use Trail             |  | OSMP Easement or Jointly Owned, County-Managed Land |
|  | OSMP Trailhead                   |  | OSMP Gliding Access              |  | Other Government Land                               |
|  | OSMP Access Point                |  | Non-OSMP Managed Hiking Trail    |  |   |
|  | OSMP Recreational Feature Access |  | Non-OSMP Managed Multi-Use Trail |  |   |
|  | Boulder County Trailhead         |  | Non-OSMP Planned Trail           |  |   |

Trail changes are depicted conceptually. Actual trail alignments will differ.