

PROJECT PURPOSE

The 30th & Colorado Underpass project will:

- Provide a safer, more accessible and efficient crossing of 30th & Colorado for those traveling through the intersection on a typical day:
 - 30,000 vehicles
 - 2,100 pedestrians and bicyclists, and
 - 1,250 transit riders
- Support the current and anticipated increased travel between CU's main and east campuses
- Implement elements of the 30th & Colorado Corridors Study final design options

PROJECT COST ESTIMATE AND FUNDING BREAKDOWN

The project has received the following in project funds:

- \$12.5 million (Total)
 - \$4.75 million (Federal Funds)
 - \$5.10 million (City of Boulder Funds)
 - \$2.65 million (University of Colorado Funds)

PROJECT IMPROVEMENTS

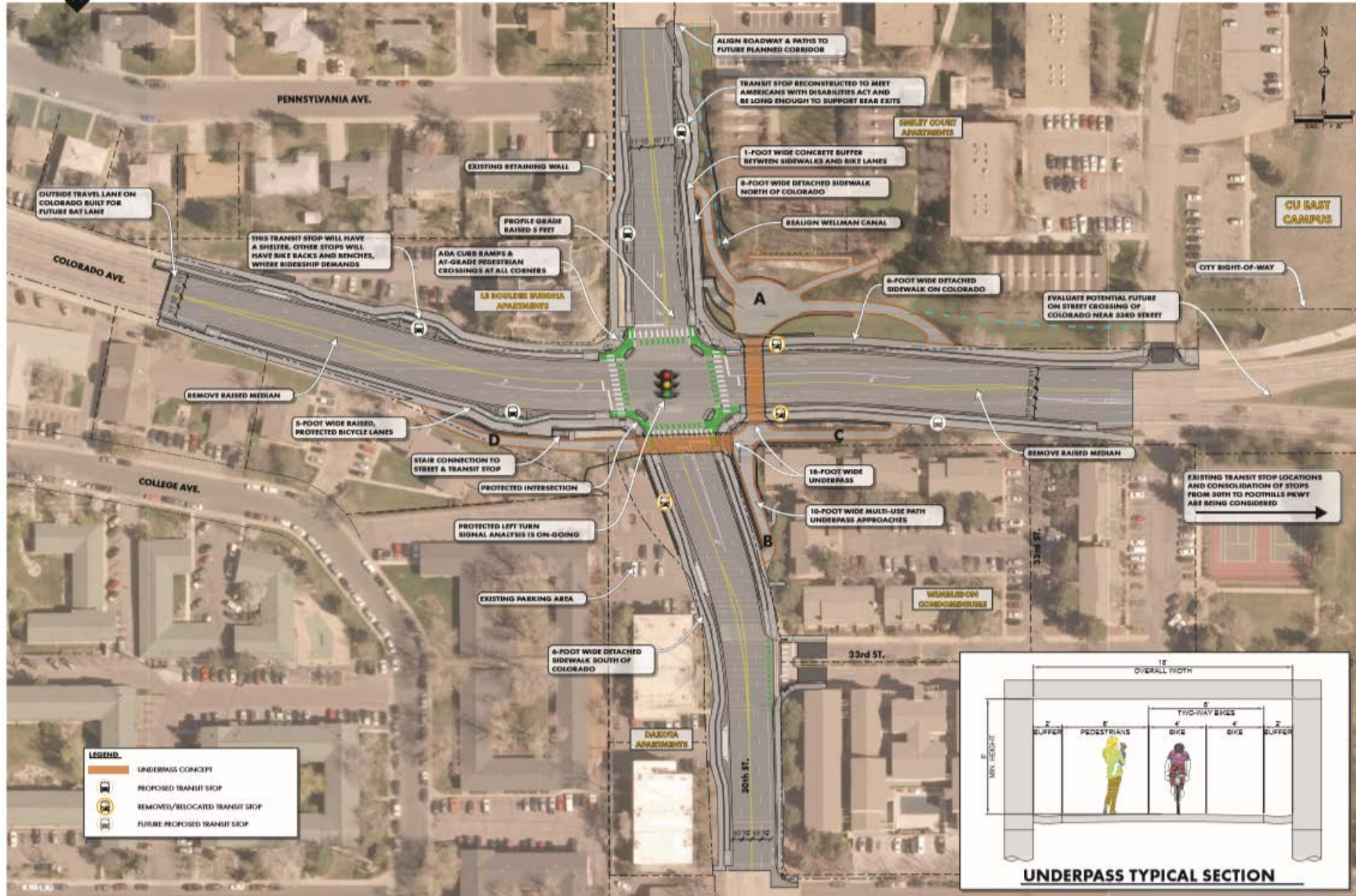
The 30th & Colorado Underpass project will:

- Construct pedestrian and bicycle underpasses under 30th Street and Colorado Avenue
- Construct an at-grade "protected intersection" to improve safety for people using all modes of travel (bicyclists and pedestrians are separated from cars to provide increased visibility and reaction times)
- Implement the 30th and Colorado Corridor Study preferred sidewalk and bicycle facilities at the intersection
- Connect to existing sidewalks, bike lanes and multi-use paths
- Reconstruct or relocate existing transit stops
- Evaluate traffic signal operations for potential changes
- Install underpass lighting, landscaping and other urban design features
- Incorporate public art/ urban design



TO CONSTRUCT THESE IMPROVEMENTS

- Property and easements will need to be acquired from properties adjacent to the intersection
- The road will be raised five feet at the intersection
- 30th Street will shift to the west and Colorado Ave. will shift to the north
- The Wellman Canal will be relocated
- Underground and overhead public and private utilities will be relocated
- Permits and approvals will be acquired from:
 - Colorado Department of Transportation
 - CU Design Review Board & Board of Regents
 - Various City of Boulder departments and divisions



30TH & COLORADO UNDERPASS

UNDERPASS CONCEPTS & ON-STREET IMPROVEMENTS

LEGEND

- UNDERPASS CONCEPT
- PROPOSED TRANSIT STOP
- REMOVED/RELOCATED TRANSIT STOP
- FUTURE PROPOSED TRANSIT STOP

UNDERPASS TYPICAL SECTION

Labels on the map include:

- ALIGN ROADWAY & PATHS TO FUTURE PLANNED CORRIDOR
- TRANSIT STOP RECONSTRUCTED TO MEET AMERICANS WITH DISABILITIES ACT AND BE LONG ENOUGH TO SUPPORT BEAR EXITS
- SMELLY COURT APARTMENTS
- 1-FOOT WIDE CONCRETE BUFFER BETWEEN SIDEWALKS AND BIKE LANES
- 8-FOOT WIDE DETACHED SIDEWALK NORTH OF COLORADO
- REALIGN WELLMAN CANAL
- CITY RIGHT-OF-WAY
- CU EAST CAMPUS
- EVALUATE POTENTIAL FUTURE ON STREET CROSSING OF COLORADO NEAR 33RD STREET
- REMOVE RAISED MEDIAN
- 6-FOOT WIDE DETACHED SIDEWALK ON COLORADO
- EXISTING TRANSIT STOP LOCATIONS AND CONSOLIDATION OF STOPS FROM 30TH TO FOOTHILLS PKWY ARE BEING CONSIDERED
- REMOVE RAISED MEDIAN
- 16-FOOT WIDE UNDERBRASS
- 16-FOOT WIDE MULTI-USE PATH UNDERBRASS APPROACHES
- EXISTING TRANSIT STOP LOCATIONS AND CONSOLIDATION OF STOPS FROM 30TH TO FOOTHILLS PKWY ARE BEING CONSIDERED
- REMOVE RAISED MEDIAN
- 5-FOOT WIDE RAISED, PROTECTED BICYCLE LANES
- STAIR CONNECTION TO STREET & TRANSIT STOP
- PROTECTED INTERSECTION
- PROTECTED LEFT TURN SIGNAL ANALYSIS IS ON-GOING
- EXISTING PARKING AREA
- 6-FOOT WIDE DETACHED SIDEWALK SOUTH OF COLORADO
- 33rd ST.
- 30th ST.
- WINDSOR CONDOMINIUMS
- DANFORTH APARTMENTS
- COLLEGE AVE.
- ADDA CURB RAMPS & AT-GRADE PEDESTRIAN CROSSINGS AT ALL CORNERS
- 33 BOWLING BUREAU APARTMENTS
- PROFYLE GRADE RAISED 5 FEET
- EXISTING RETAINING WALL
- OUTSIDE TRAVEL LANE ON COLORADO BUILT FOR FUTURE B&T LANE

* Materials and landscaping shown are representative only



EXISTING CONDITIONS - LOOKING NORTHWEST



EXISTING CONDITIONS - LOOKING SOUTHWEST



CONCEPTUAL RENDERING - LOOKING NORTHWEST



CONCEPTUAL RENDERING - LOOKING SOUTHWEST

* Materials and landscaping shown are representative only



A. NORTHEAST CORNER CONCEPT AT CU



B. SOUTHEAST APPROACH FROM 30TH



C. SOUTHEAST APPROACH FROM COLORADO



D. SOUTHWEST APPROACH FROM COLORADO



WHAT WE WANT TO HEAR FROM YOU

Tell us what you think about the underpass and intersection improvements.

- o What are your impressions of the project design?
- o What else should be considered during final design?
- o What questions do you have about construction?

CONSTRUCTION

Construction is currently estimated to begin in fall 2019 and take about 15 to 18 months to complete. The intersection of 30th Street & Colorado Avenue will remain open during construction. *

If you travel through the 30th & Colorado intersection during construction, you may experience:

- Speed limit reductions to 20-25mph
- A single vehicle lane of travel in each direction
- On-street bicycle lane closures
- Pedestrian and bicycle detours
- Transit stop relocations or closures
- Travel delays

* Critical short-term full-time closures will be occasionally required

NEXT STEPS

- Finalize designs
- Acquire easements and property
- Receive necessary permits and approvals
- Place project out to bid
- Select contractor
- Begin construction

CONTACTS

Jason Fell, Project Manager
303-441-3200
FellJ@bouldercolorado.gov

Noreen Walsh, Senior Transportation Planner
303-441-3200
WalshN@bouldercolorado.gov

PROJECT TIMELINE

