

CHERRYVALE

HOW WILL YOU USE THE TRAILS TODAY?

Some activities below may not be represented in this map.
Symbols below may overlap in the map.

Hike

- OSMP Hiking Only Trail, No Horses or Bikes
- - - OSMP Hiking & Equestrian Only Trail, No Bikes
- OSMP Hiking, Biking & Equestrian Trail

Bike

- OSMP Hiking, Biking & Equestrian Trail

Walk a Dog

- No Dogs
- Leash Required
- Leash, or Voice & Sight Control with Voice & Sight Dog Tag
- On-Corridor (20 ft from trail) Voice & Sight Control with Voice & Sight Dog Tag
- Leash Requirement Dates Labeled on Trail. Otherwise: Leash, or Voice & Sight Control with Voice & Sight Dog Tag
- Leash, or Voice & Sight Control (Mon-Fri)
- Leash Required (Sat-Sun)
- Dogs Prohibited Off-Trail Area
- Leash Required Off-Trail Area

Ride a Horse

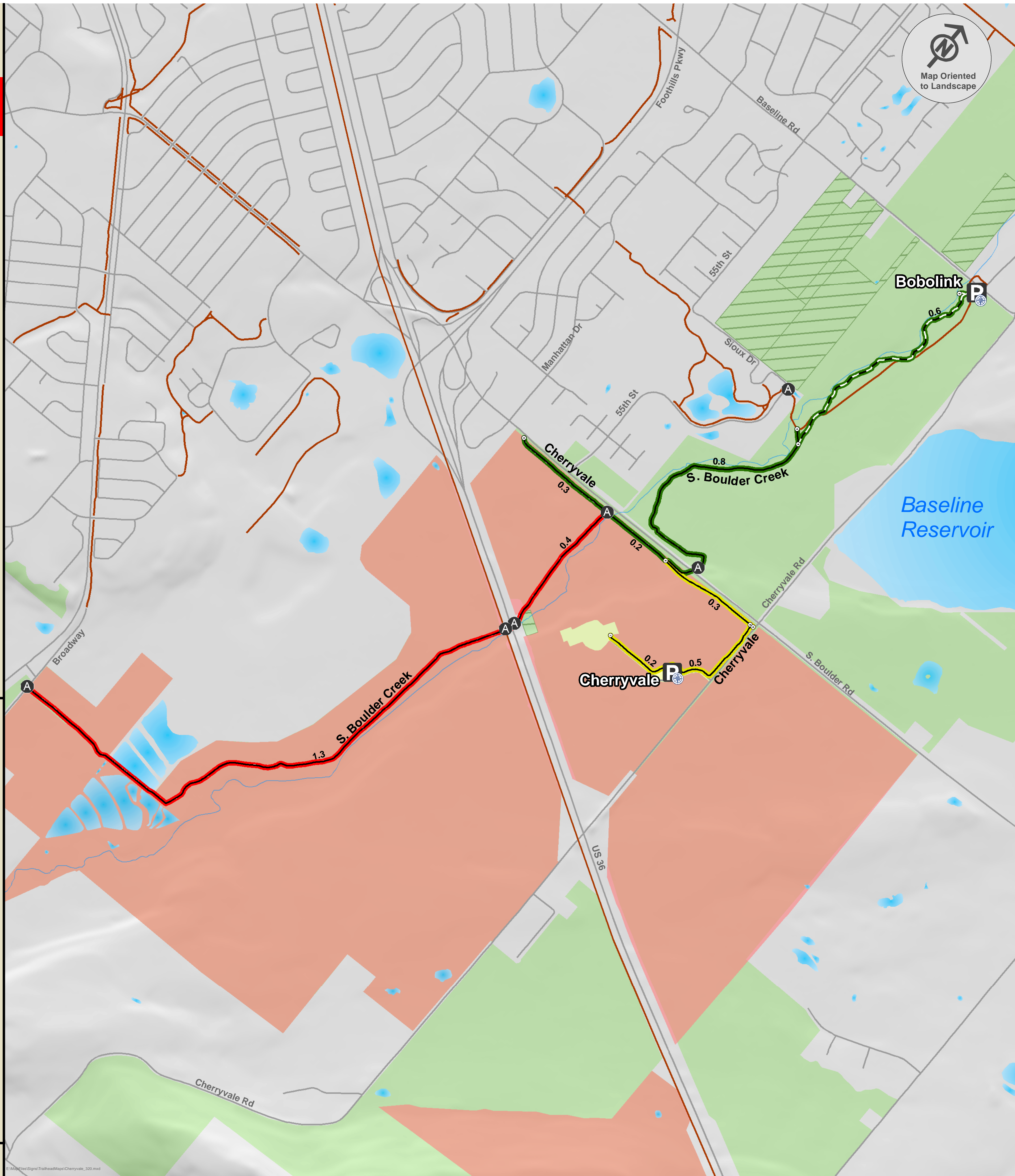
- - - OSMP Hiking & Equestrian Only Trail, No Bikes
- OSMP Hiking, Biking & Equestrian Trail
- Horses Prohibited Off-Trail

All Users

- P** OSMP Trailhead with Parking
- \$** OSMP Trailhead with Fee Parking (For Non-Boulder County Residents)
- A** Access Point - Parking On Public Streets Unless Otherwise Posted
- P** County Trailhead
- Orientering Map
- Mileage Labeled Along Trails ≥ 0.1 Miles
- OSMP Climbing Access
- ▲▲▲▲ OSMP Gliding Access
- Non-OSMP Hiking Trail
- Non-OSMP Climbing Access
- Non-OSMP Multi-Use Trail
- ▭ Habitat Conservation Area (HCA) Boundary Off-Trail Permit Required. Go To www.osmppermits.org
- Grassland Bird Closure May 1 - July 31
- ▨ No Public Access Area
- ▭ OSMP Property (Includes Regulatory Areas)
- ▭ Other Public Lands

0 0.1 0.2 0.3 0.4 0.5 Miles

For All of OSMP's Interactive Web Maps:
<http://bouldercolorado.gov/osmp/gis-lab>



E:\MapFiles\Signs\TrailheadMaps\Cherryvale_320.mxd