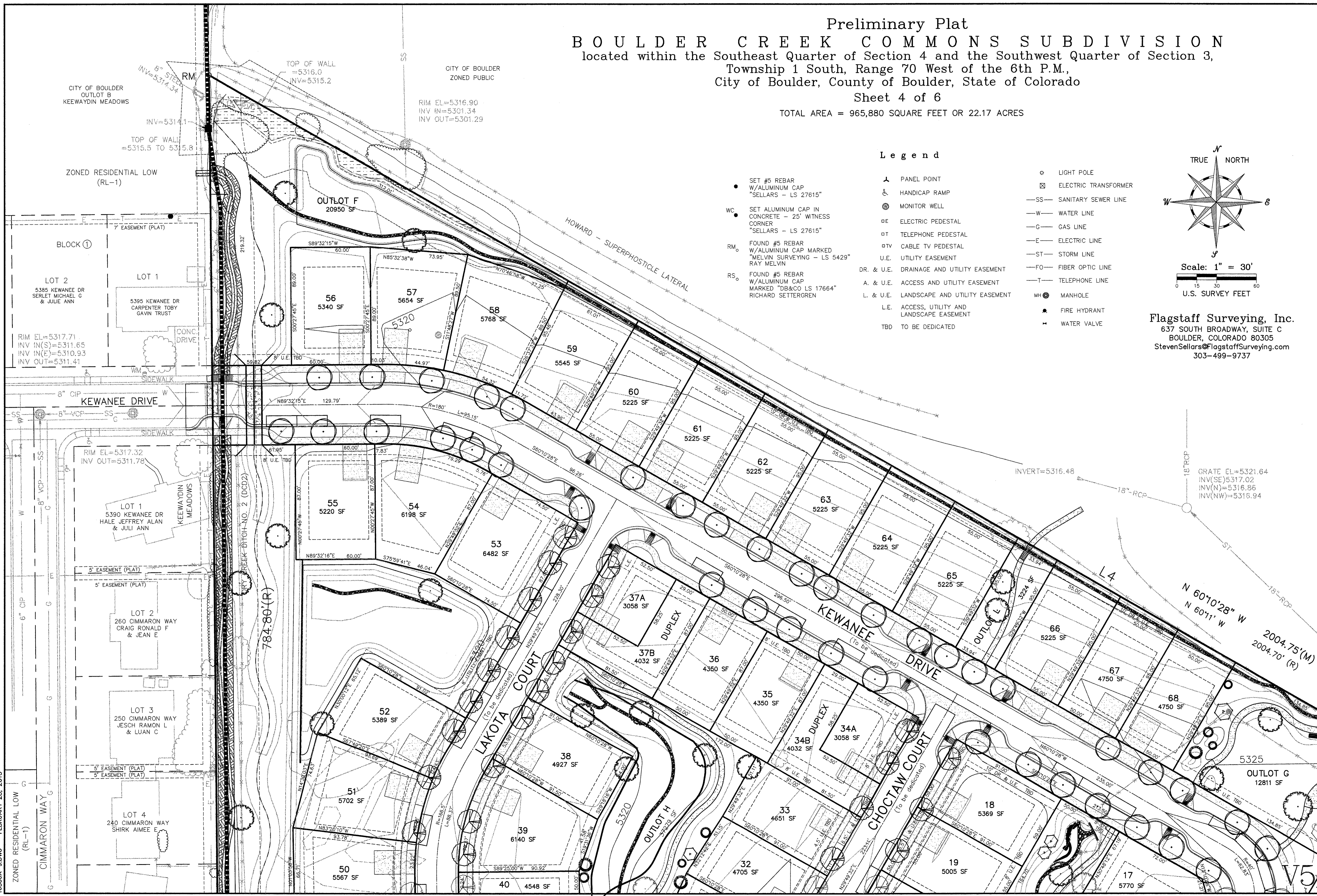


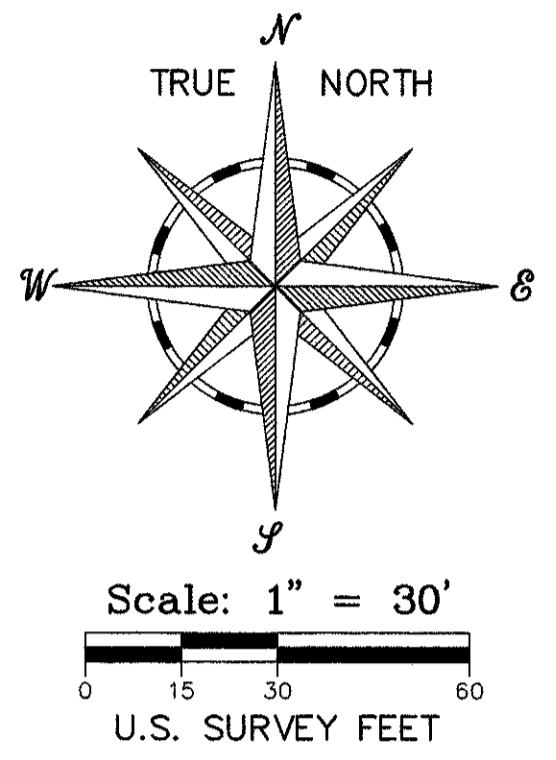
Preliminary Plat
BOULDER CREEK COMMONS SUBDIVISION
 located within the Southeast Quarter of Section 4 and the Southwest Quarter of Section 3,
 Township 1 South, Range 70 West of the 6th P.M.,
 City of Boulder, County of Boulder, State of Colorado
 Sheet 4 of 6

TOTAL AREA = 965,880 SQUARE FEET OR 22.17 ACRES



Legend

- SET #5 REBAR W/ALUMINUM CAP "SELLARS - LS 27615"
- WC • SET ALUMINUM CAP IN CONCRETE - 25' WITNESS CORNER "SELLARS - LS 27615"
- RM • FOUND #5 REBAR W/ALUMINUM CAP MARKED "MELVIN SURVEYING - LS 5429" RAY MELVIN
- RS • FOUND #5 REBAR W/ALUMINUM CAP MARKED "DB&CO LS 17664" RICHARD SETTERGREN
- ▲ PANEL POINT
- ♿ HANDICAP RAMP
- ⊙ MONITOR WELL
- ELECTRIC PEDESTAL
- ⊙ TELEPHONE PEDESTAL
- ⊙ TV CABLE TV PEDESTAL
- U.E. UTILITY EASEMENT
- DR. & U.E. DRAINAGE AND UTILITY EASEMENT
- A. & U.E. ACCESS AND UTILITY EASEMENT
- L. & U.E. LANDSCAPE AND UTILITY EASEMENT
- L.E. ACCESS, UTILITY AND LANDSCAPE EASEMENT
- TBD TO BE DEDICATED
- ⊙ LIGHT POLE
- ⊠ ELECTRIC TRANSFORMER
- SS— SANITARY SEWER LINE
- W— WATER LINE
- G— GAS LINE
- E— ELECTRIC LINE
- ST— STORM LINE
- FO— FIBER OPTIC LINE
- T— TELEPHONE LINE
- MH • MANHOLE
- FIRE HYDRANT
- WATER VALVE



Flagstaff Surveying, Inc.
 637 SOUTH BROADWAY, SUITE C
 BOULDER, COLORADO 80305
 StevenSellars@FlagstaffSurveying.com
 303-499-9737

16500A-9.DWG FEBRUARY 28, 2013
 ZONED RESIDENTIAL LOW (RL-1)