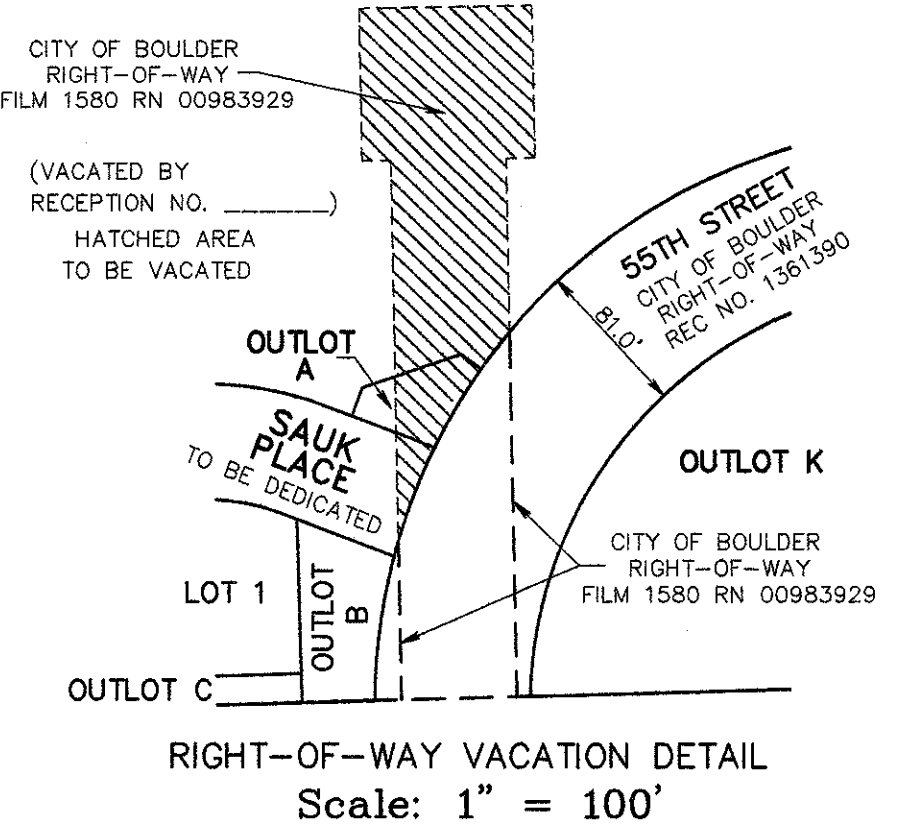


**Preliminary Plat**  
**BOULDER CREEK COMMONS SUBDIVISION**  
 located within the Southeast Quarter of Section 4 and the Southwest Quarter of Section 3,  
 Township 1 South, Range 70 West of the 6th P.M.,  
 City of Boulder, County of Boulder, State of Colorado  
 Sheet 6 of 6

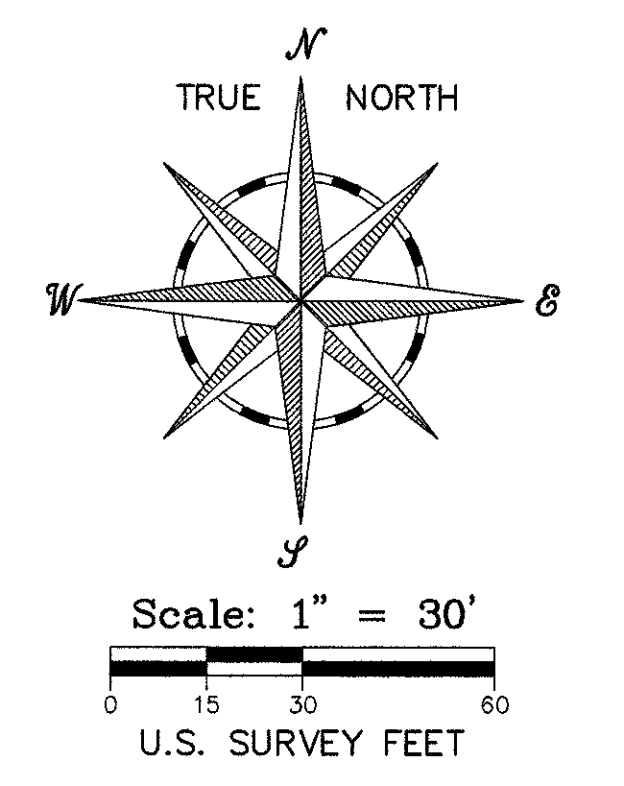
TOTAL AREA = 965,880 SQUARE FEET OR 22.17 ACRES

CITY OF BOULDER  
 BOOK 866 PAGE 192  
 REC. NO. 492733  
 JULY 18, 1950

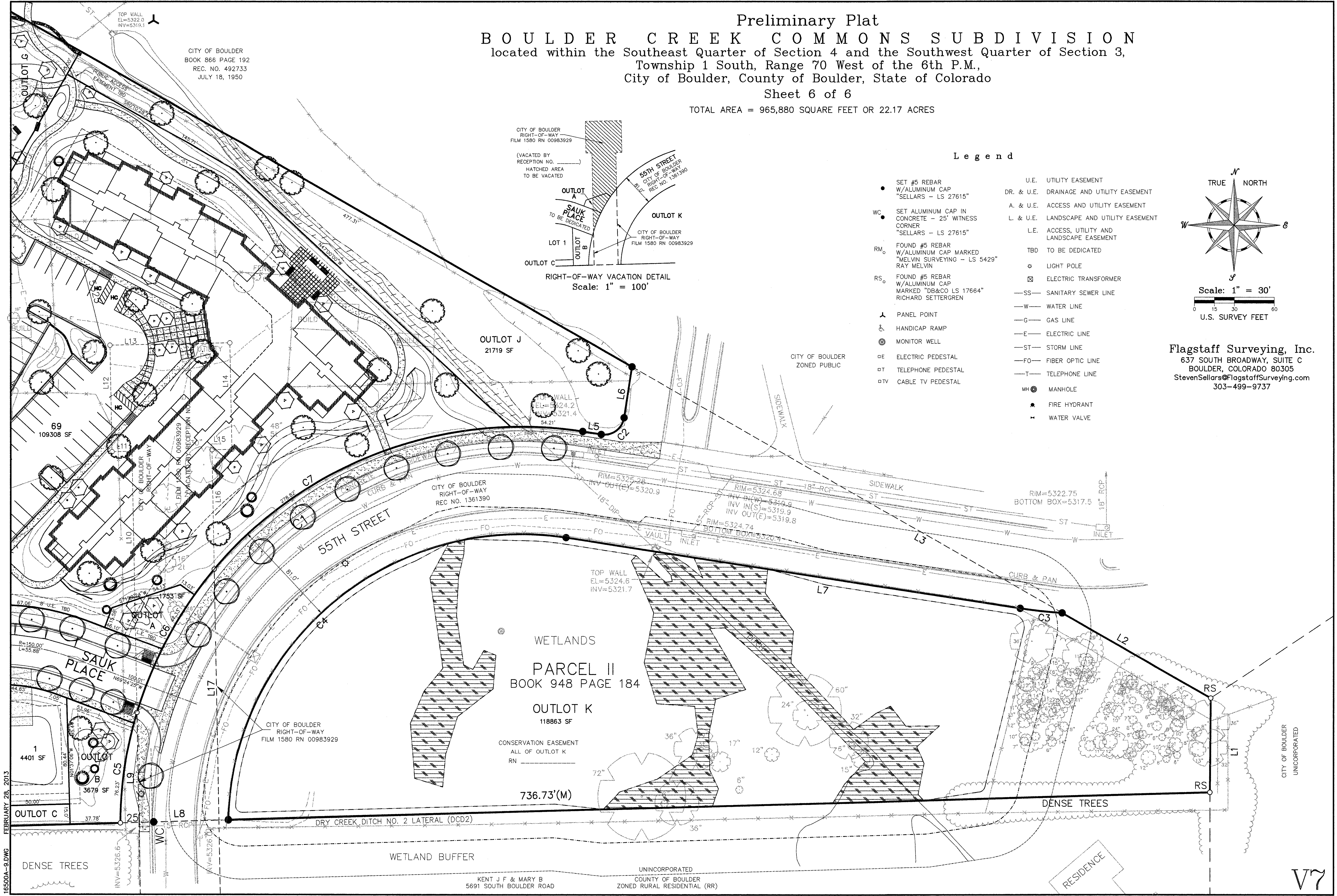


**Legend**

- |  |   |
|--|---|
| ● SET #5 REBAR W/ALUMINUM CAP "SELLARS - LS 27615"                             | U.E. UTILITY EASEMENT                       |
| ● SET ALUMINUM CAP IN CONCRETE - 25' WITNESS CORNER "SELLARS - LS 27615"       | DR. & U.E. DRAINAGE AND UTILITY EASEMENT    |
| ○ FOUND #5 REBAR W/ALUMINUM CAP MARKED "MELVIN SURVEYING - LS 5429" RAY MELVIN | A. & U.E. ACCESS AND UTILITY EASEMENT       |
| ○ FOUND #5 REBAR W/ALUMINUM CAP MARKED "DB&CO LS 17664" RICHARD SETTERGREN     | L. & U.E. LANDSCAPE AND UTILITY EASEMENT    |
| ▲ PANEL POINT  | L.E. ACCESS, UTILITY AND LANDSCAPE EASEMENT |
| ♿ HANDICAP RAMP  | TBD TO BE DEDICATED                         |
| ⊙ MONITOR WELL   | ☉ LIGHT POLE                                |
| ⊠ ELECTRIC PEDESTAL  | ⊠ ELECTRIC TRANSFORMER                      |
| ⊡ TELEPHONE PEDESTAL   | —SS— SANITARY SEWER LINE                    |
| ⊡ TV CABLE TV PEDESTAL   | —W— WATER LINE                              |
|  | —G— GAS LINE                                |
|  | —E— ELECTRIC LINE                           |
|  | —ST— STORM LINE                             |
|  | —FO— FIBER OPTIC LINE                       |
|  | —T— TELEPHONE LINE                          |
|  | MH ⊙ MANHOLE                                |
|  | ● FIRE HYDRANT                              |
|  | ⊠ WATER VALVE                               |



**Flagstaff Surveying, Inc.**  
 637 SOUTH BROADWAY, SUITE C  
 BOULDER, COLORADO 80305  
 StevenSellers@FlagstaffSurveying.com  
 303-499-9737



16500A-9.DWG  
 FEBRUARY 28, 2013

UNINCORPORATED  
 COUNTY OF BOULDER  
 ZONED RURAL RESIDENTIAL (RR)  
 KENT J F & MARY B  
 5691 SOUTH BOULDER ROAD